

Evaluation Assignment 4- Design Support Documents

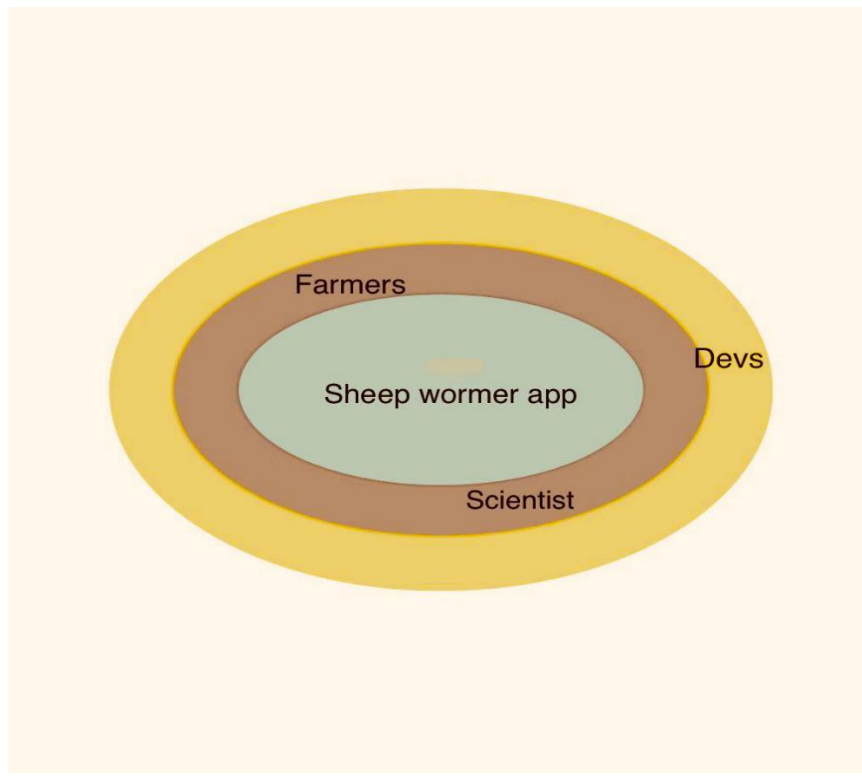
-Harika Vajrala

The goal of this application is to assist sheep farmers in controlling internal parasites inside their flock. Usually anthelmintic drugs, also known as dewormers, were used on a regular basis to treat sheep flocks for internal parasites, or deworm them. This ensures that every animal in the flock is treated equally. Due to the fact that only resistant worms survive to pass on their genetic makeup to subsequent generations, this has eventually resulted in anthelmintic-resistant worms. It is now advised that only sheep with a parasite problem receive treatment, as opposed to worming each sheep in the flock. Since a larger amount of non-resistant worms are generated as a result, anthelmintics can continue to be effective because both resistant and non-resistant worms exist in the breeding population.

Team:

Developers	Ryan Cole Leiya Rybicki Ben Fosdick Brendan Fuhrman Sidney Gillig Jacob Smith AK Syracuse
UX Consultants	Uday Sagar Reddy Meka Harika Vajrala

Stakeholder Analysis:



Description of each stakeholder:

A) Farmer:

Every time a parasitic check is performed, the farmer will log the findings on the app. The farmer has the option to view the findings of each sheep's most recent parasite check in the app during these checks or at a later time. Additionally, users will have the ability to add and delete sheep from the app as needed. Apart from performing worm inspections, the user will utilize the app for reviewing and perhaps uploading the recorded data. The user should also be able to choose whether or not to share their data, and in doing so, see the statistics of people in their immediate vicinity who have also chosen to share their data.

B) Scientist:

The information that the farmers stored will be examined by the scientist. in order to make it easier for the scientist to study them later on. For a scientist, every photograph is an essential resource. In the future, they may organize the photos into a dataset. One other category of primary stakeholder is the scientist.

C) Developers:

As they implement the improvements requested by the scientists and farmers, the developers in this case are the secondary stakeholders.

Stakeholders Goal Influencer table:

Stakeholder	Goal	Influence
Farmers	Every sheep in the herd will have an identifying code, which they will use to verify. A feature that allows users to keep data on the device and upload it later when internet access is available should be included.	Scientists will find great use for the photos that farmers have shared in their ongoing studies.
Scientist	The information that the farmers stored will be examined by the scientist. in order for the scientist's future research on them to be beneficial.	Future developments will be greatly impacted by the scientist's research.
Developers	To reduce the workload of scientists and farmers, the developers will produce a useful web application, which UX consultants will thoroughly test.	By meeting the requirements of scientists and farmers alike, the developers can have an impact on the application. Additionally, they might modify the UX/UI components to suit their requirements.

Persona 1:

Name	Hayden
Role	Primary Stakeholder
Age	25
Residence	Texas
Education	Agricultural Science
Occupation	Farmer
Goals	While deworming the sheep, he can utilize the app to suit his needs.
Review about application	Satisfied.

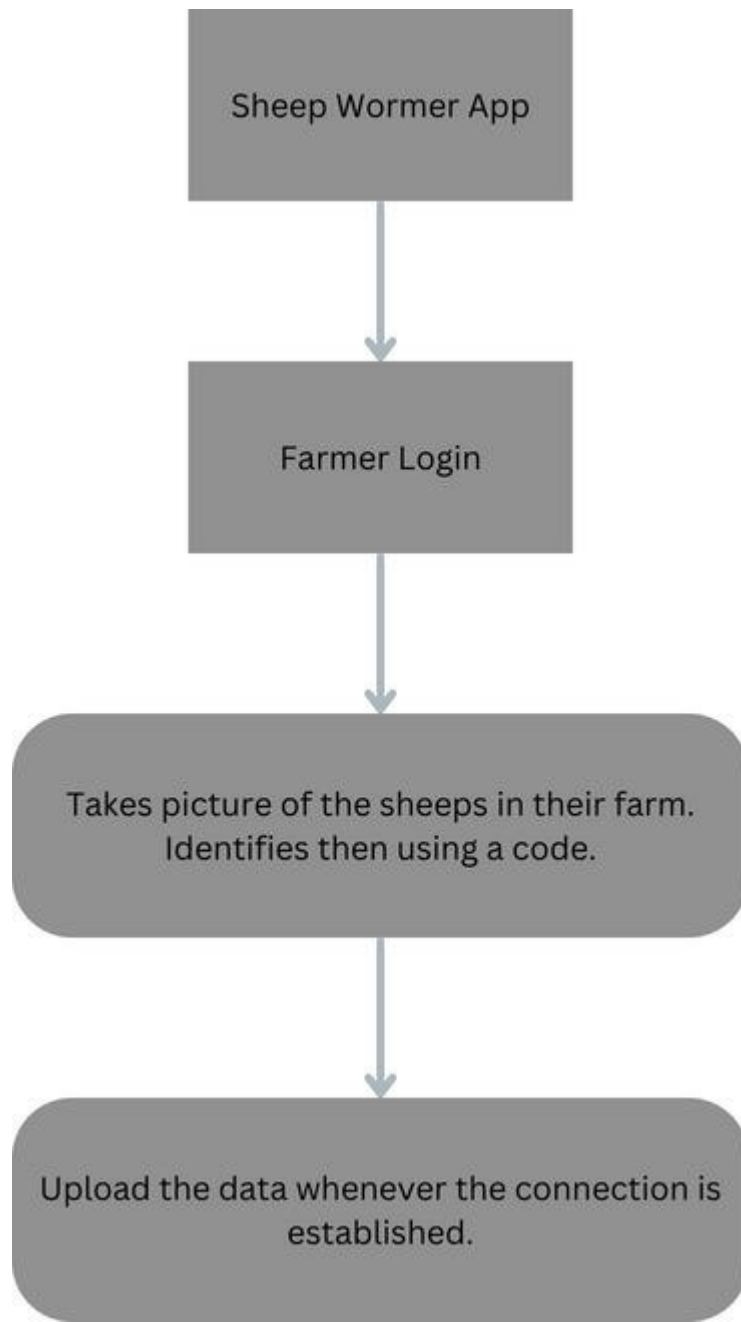
Persona 2:

Name	Harrison
Role	Primary Stakeholder
Age	27
Residence	South Carolina
Education	Computer science
Occupation	Application Developer
Goals	He can have access to the application code.
Review about the application	He must alter the UI and code in response to requests from the main stakeholders.

Persona 3:

Name	Hazel
Role	Primary Stakeholder
Age	29
Residence	Michigan
Education	Ph.D in Agricultural science
Occupation	Scientist
Goals	He can able to use the images for his research
Review about the application	Satisfied.

Hierarchical Analysis:



Post-Interview Notes:

During the recent meeting, the shepherd provided an update, mentioning that in addition to the initial spreadsheet, they meticulously reviewed and inputted extra data from the previous year. The newly incorporated columns primarily pertain to registration details, which can be overlooked. The shepherd highlighted their approach of "charting by exception," indicating that notes were only made when issues surfaced. For example, on 11/24, four ewe lambs out of 15 checked were wormed, indicating a targeted strategy. The absence of FAMACHA scores implies a likely consistent worming approach at level 3. The scarcity of data underscores the significance of the envisioned app, aiming to simplify comprehensive data recording for improved analysis.